

# **Redding to Wilton Upgrade Project**

**Town of Weston**

**November 1, 2018**

- Project History & Siting Process
- Project Scope
- Project Need
- Work in Weston
- Schedule/Next Steps
- Stakeholder Outreach
- Contact Information

# Redding to Wilton Project: Project History & Siting Process

- On January 26, 2017, Eversource filed a Petition with the Connecticut Siting Council (CSC) requesting approval to construct the Redding to Wilton Upgrade Project.
  - Eversource received approval from the CSC on March 3, 2017 (Petition No. 1287).
- Since CSC approval of this Project, Eversource conducted supplemental inspections of the transmission lines in this corridor as part of its maintenance program and identified additional structures that need replacement, not just reinforcement.
- Eversource determined that including the additional structure replacements as part of the Redding to Wilton Project would be the least impactful to the community and the environment.
- In order to further reduce impact to the community and the environment, Eversource will also conduct its cyclical Vegetation Maintenance program simultaneously with the Redding to Wilton Project.
- Eversource will be filing an Amendment to its original Petition in the fourth quarter of 2018.
  - The Amendment will seek approval to replace additional structures and conduct its Vegetation Maintenance Program - in addition to the original Project scope approved in 2017.

# Redding to Wilton Project Scope

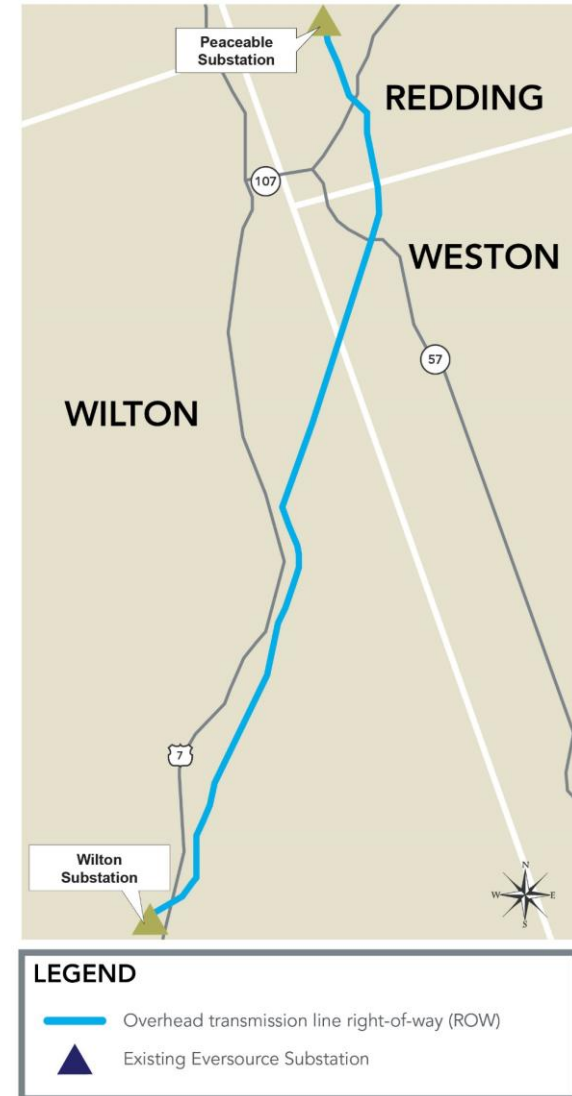
The Project, as approved by the Connecticut Siting Council (CSC) in 2017 included:

- The replacement of 8 structures;
- Replacement of the overhead line;
- Replacement of the shield wire with a new communication & ground wire;
- And reinforcement of some structures with items such as cross bracing, cross-arms and new guy wires.

Eversource will soon file an amendment to its original Petition for the Redding to Wilton Project, seeking approval to include:

- The replacement of 25 structures (in total) in addition to the structure replacement and reinforcement work that was approved under the original Petition scope.
- Eversource's cyclical Vegetation Maintenance Program.

Redding to Wilton Project  
Project Route Map



- Following a review of national electric grid vulnerabilities and storm related power outages, federal and regional regulators established a more rigorous set of criteria upon which electric utilities rate the reliability of their various system components.
- In a study by the regional grid administrator, ISO-NE, the electric transmission lines which deliver power to substations serving the southwest Connecticut towns were found to have a number of issues which, under certain conditions, might hinder their ability to adequately serve the electrical demand in the area.
- The improvements in this Project will bring the electric supply system, which serves the towns in southwestern Connecticut, into compliance with these new mandatory national and regional reliability standards. The Project will also provide greater ability for power to move more freely to meet customer demand throughout the area.
- In addition, visual inspections of the 1470 Line (spanning from Peaceable Substation on Peaceable Street in Redding to Wilton Substation on Danbury Road in Wilton) have identified the need to replace deteriorated structures.
- The existing wood structures on the 1470 Line were originally installed in 1959 and have deteriorated with age, as well as sustained woodpecker damage. Replacing these structures is necessary to maintain system reliability.

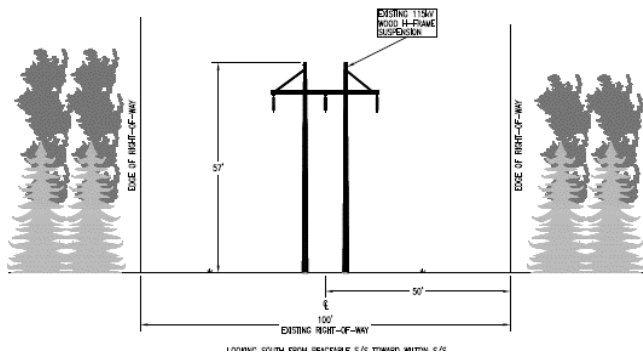
# Redding to Wilton Project Need (cont.)



# Redding to Wilton Project: Work in Weston

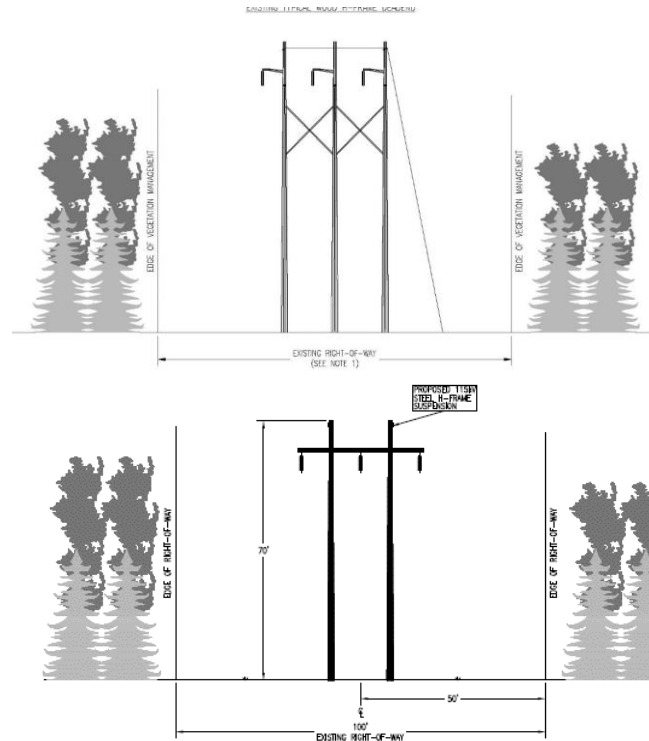
**Overhead Line Scope** – Approximately 0.8 miles of the Project Route is in Weston. The Project will take place within existing rights-of-way in Weston.

- Replace 8 existing wood H-frames with steel structures (H-Frame and Three-Pole)
  - New structures will range from 52 feet to 75 feet in height.
    - Height increases from the existing structures range from 4 – 21 feet.
  - To facilitate installation of the new structures, access roads and work pads will be installed.
  - Vegetation will also be cleared as needed within the right-of-way to meet required clearances.
- Install new communication (fiber optic) wire at the top of the structures



Typical Existing Configuration

*Please note: trees in cross sections do not depict actual tree line height.*

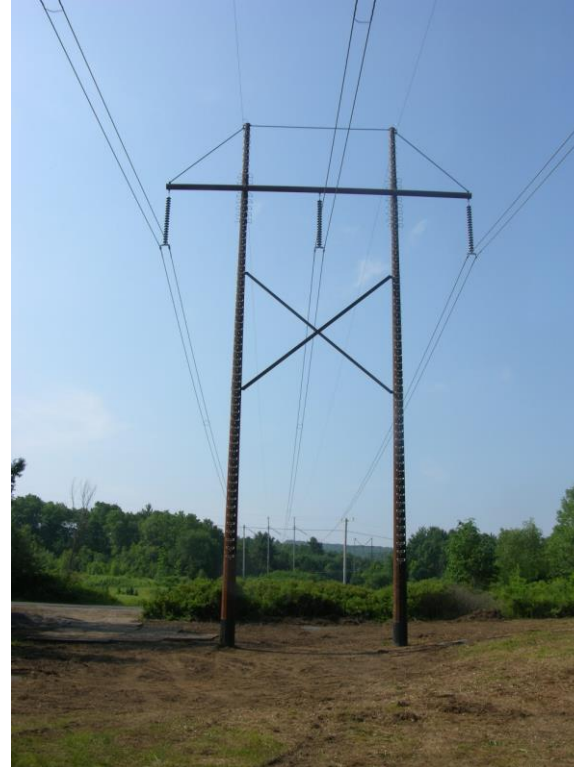


◀ Typical Proposed Configurations

# Redding to Wilton Project: Structure Replacement Example



**Example of weathering steel  
three pole (angle) structure**



**Example of weathering steel  
h-frame structure**



**Example of wood  
structure replacement**

*Illustrative Only. Actual equipment and structures may vary.*



# Redding to Wilton Project: Schedule & Next Steps\*

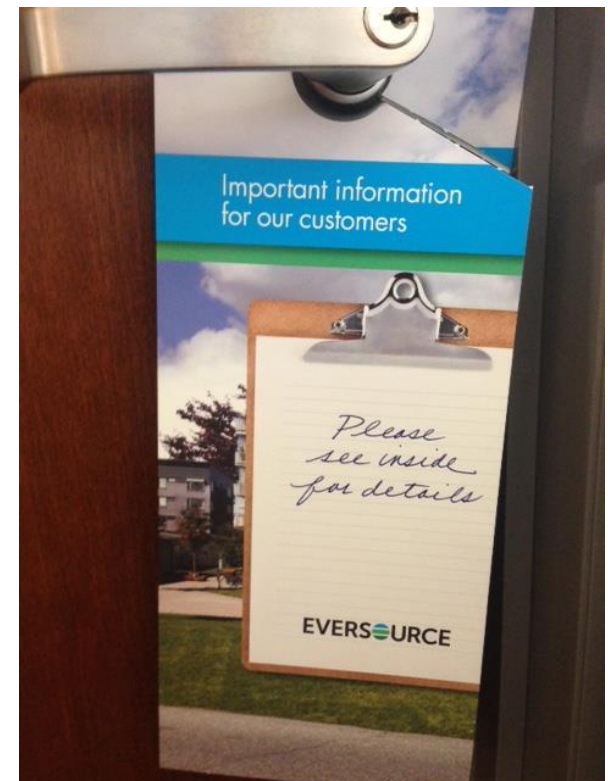
	2016	2017	Q1 2018	Q2 2018	Q3 2018	Q4 2018	Q1 2019	Q2 2019	Q3 2019	Q4 2019
Initial Briefing of Municipal Officials										
Property Owner Outreach										
Filed Initial Petition with CSC		Approval Received March 3, 2017								
Brief Municipal Officials on Project Update										
File Petition Amendment with CSC										
Construction**										
Restoration										

\*Schedule subject to change

\*\*Pending CSC Amendment approval

Eversource is committed to being a good neighbor while conducting its required maintenance and reliability upgrades. Outreach is conducted early and often to inform our customers and other stakeholders about work proposed to occur in their area and address any questions or concerns.

- Key Stakeholders:
  - Property Owners & Tenants
  - Businesses
  - Local Officials
  - State Agencies
  
- Communication Tactics:
  - Briefings, Presentations
  - Letters
  - Door-to-door outreach
  - Hotline and e-mail address
  
- General Public:
  - **Transmission Hotline 1-800-793-2202**
  - **Email: [TransmissionInfo@eversource.com](mailto:TransmissionInfo@eversource.com)**



Transmission Hotline 1-800-793-2202  
Email: [TransmissionInfo@eversource.com](mailto:TransmissionInfo@eversource.com)